

CHECK GRAPHIC SCALES BEFORE USING GRAPHIC SCALE

1 inch = 50 feet

PROJECT NUMBER: 3807101	
PROJECT MANAGER: SMH	
DATE OF RECORD: 09/11/07	
DRAWN BY: 3807101-01.LM	
CDD FILE: 3807101-01.LM	
SCALE: 1"=30'	
GRAPHIC SCALE:	
TITLE: EXISTING CONDITIONS AND SITE ANALYSIS	
DRAWING NO: C-101	
SHEET: 03 OF 07	

CURRENT ISSUE STATUS:	
PROJECT:	TOWN OF CAPE ELIZABETH SHORE ROAD PATHWAY IMPROVEMENTS
FOR SHORE ROAD PATHWAY COMMITTEE REVIEW	SEPT. 2008
REVISED PER COMMENTS	9-2-08
FOR TOWN REVIEW	8-19-08
REVISION ISSUE DESCRIPTION	DATE

**Mitchell & Associates**  
 LANDSCAPE ARCHITECTS

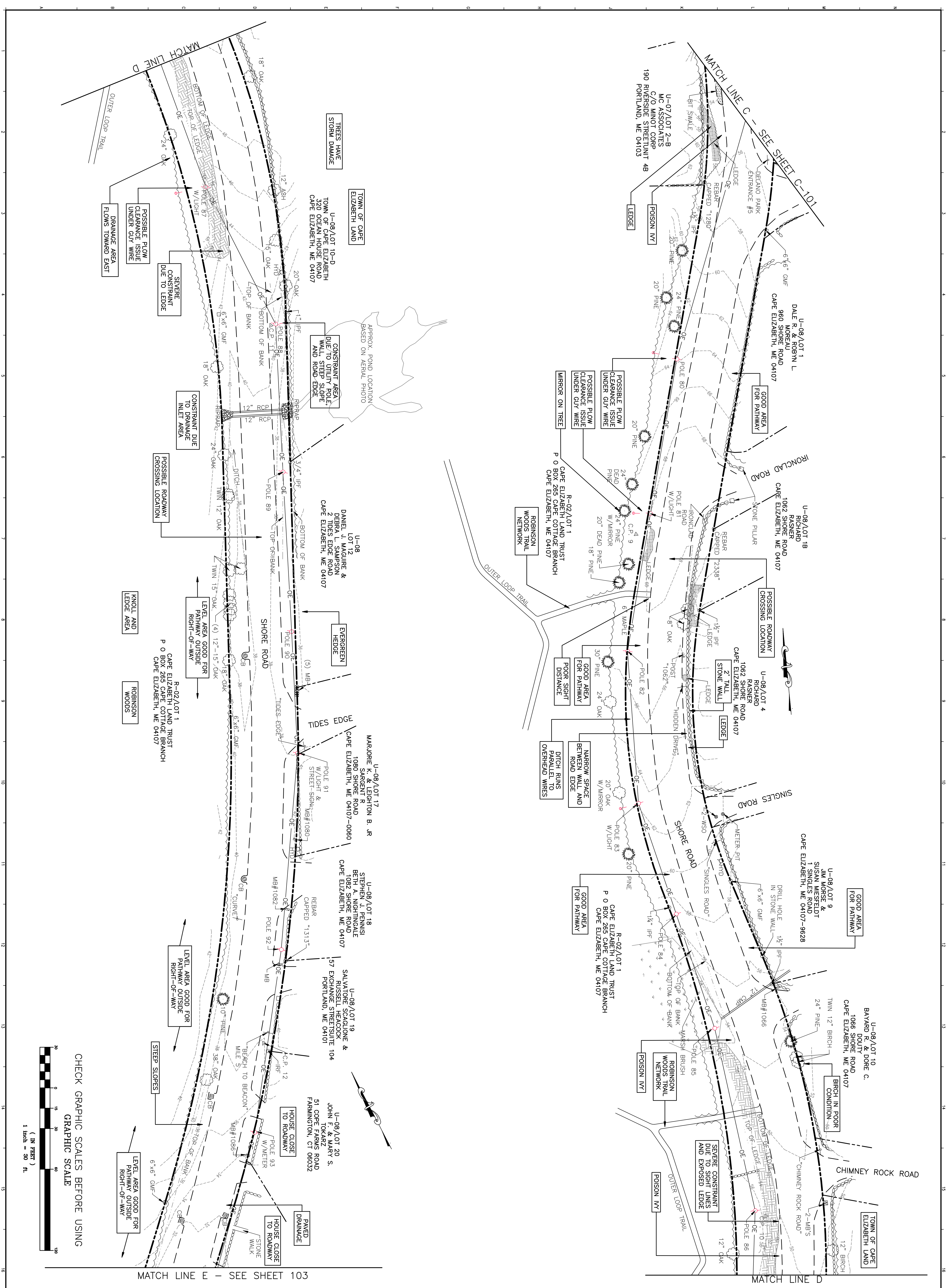
THE STAPLES SCHOOL, 70 CENTER STREET PORTLAND, MAINE 04101  
 PHONE: 207.774.6427 FAX: 207.874.2660

**oest ASSOCIATES, INC.**  
 343 Gorham Road, South Portland, ME 04106 P: (207) 761-1770 F: (207) 774-1246 www.oest.com

engineers • architects • surveyors • construction managers

PLEASE NOTE: THIS DOCUMENT MAY NOT ACCURATELY REPRESENT THE FINAL DOCUMENT. ONLY AN ENGINEER, ARCHITECT OR SURVEYOR SIGNED, SEALED AND DATED PAPER COPY, PROVIDED BY THIS OFFICE, MAY BE UTILIZED FOR BIDDING OR CONSTRUCTION PURPOSES.





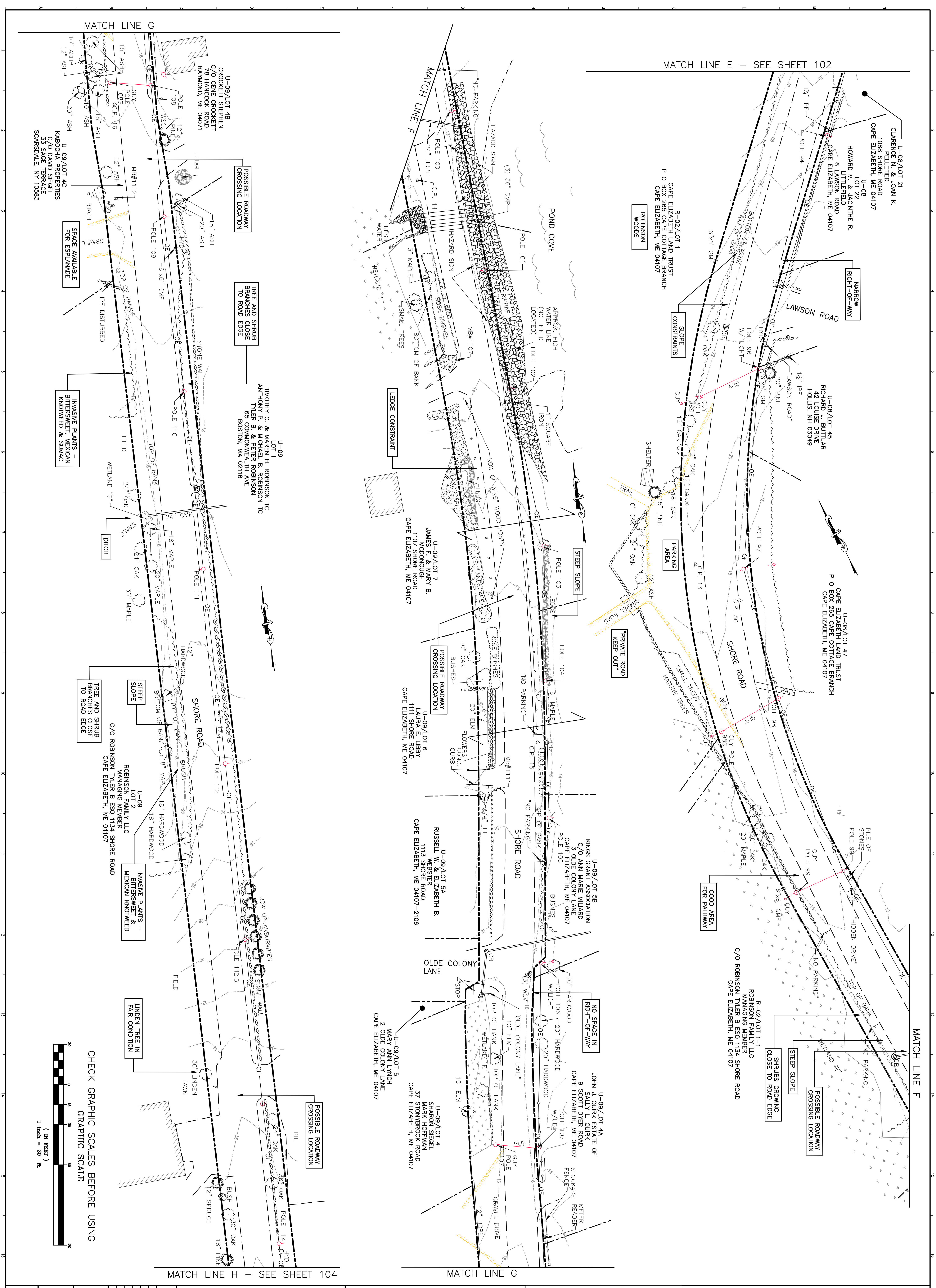
REV	DATE	DESCRIPTION
1	9-2-08	FOR SHORE ROAD PATHWAY COMMITTEE REVIEW
2	9-2-08	REVISED PER COMMENTS
3	8-19-08	FOR TOWN REVIEW
4		REVISION ISSUE DESCRIPTION

**PROJECT:**  
**TOWN OF CAPE ELIZABETH**  
**SHORE ROAD PATHWAY IMPROVEMENTS**  
 SHORE ROAD CAPE ELIZABETH, MAINE 04107

**Mitchell & Associates**  
 LANDSCAPE ARCHITECTS  
 THE STAPLES SCHOOL, 70 CENTER STREET, PORTLAND, MAINE 04101  
 PHONE: 207.774.4427 FAX: 207.874.2660

**oest ASSOCIATES, INC.**  
 343 Gorham Road, South Portland, ME 04106 P: (207) 761-1770 F: (207) 774-1246 www.oest.com  
 engineers • architects • surveyors • construction managers





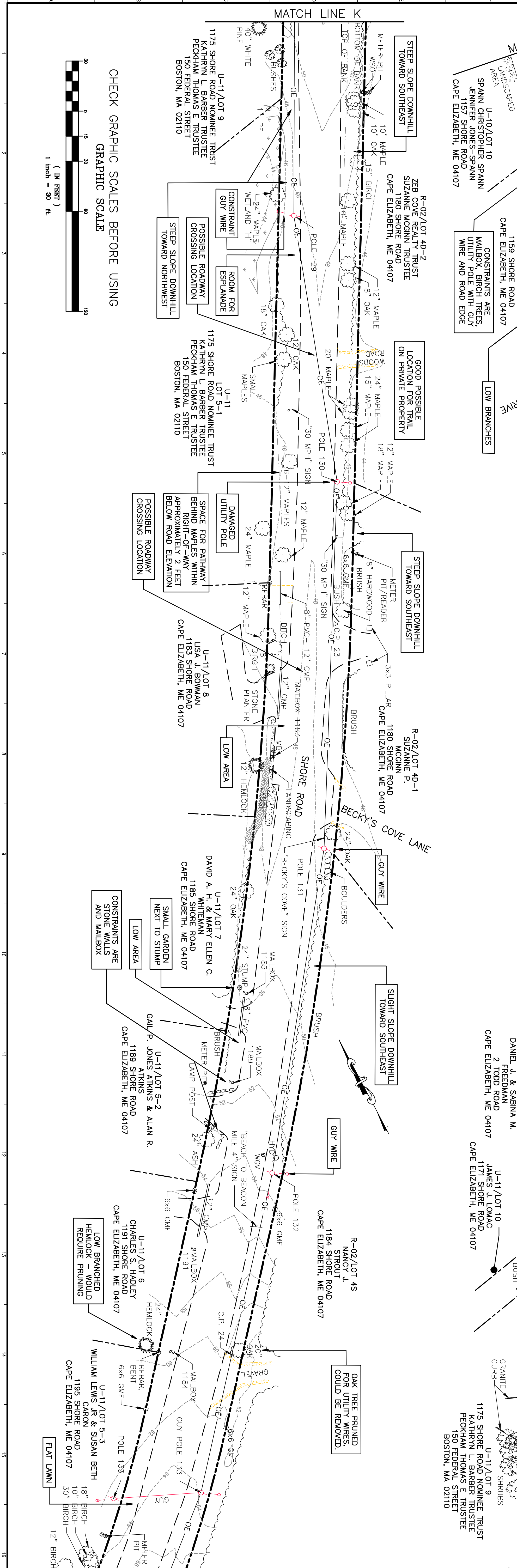
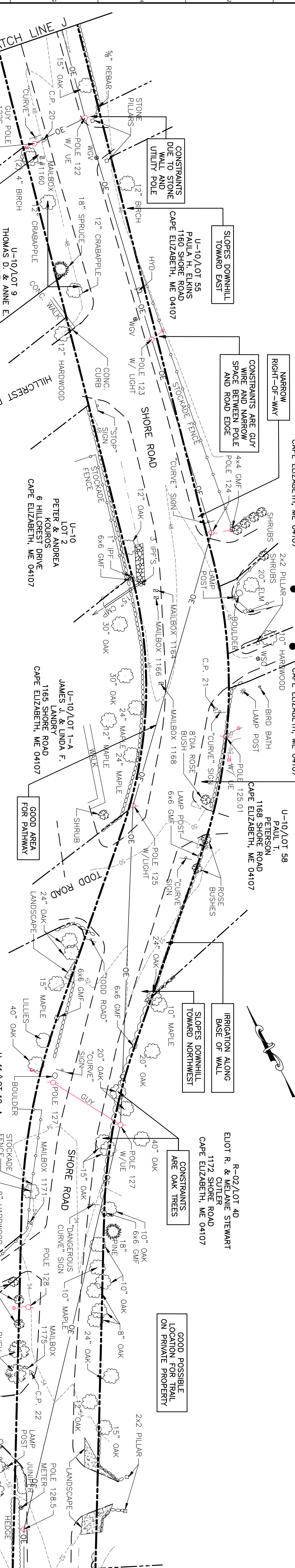
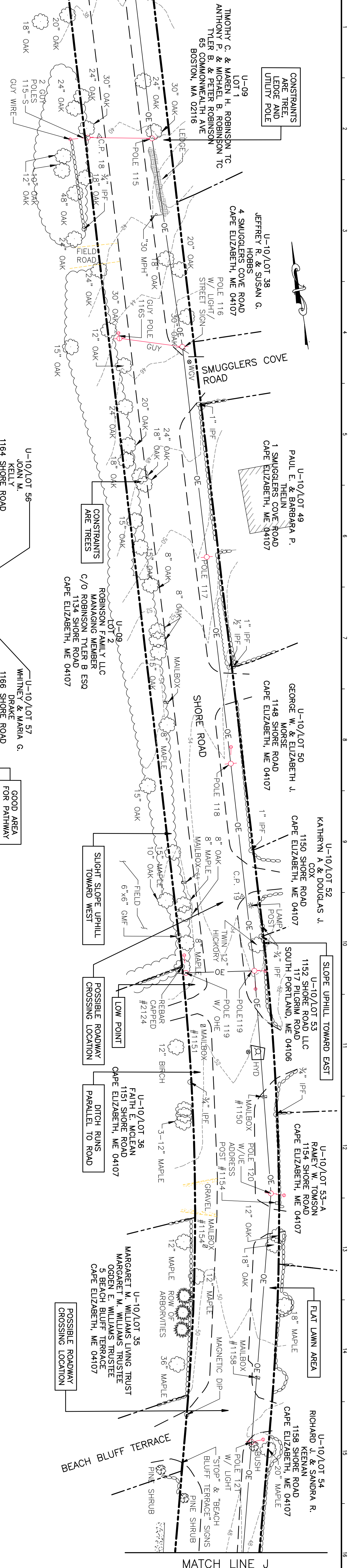
REV	DATE	DESCRIPTION
1	9-2-08	FOR SHORE ROAD PATHWAY COMMITTEE REVIEW
2	9-2-08	REVISED PER COMMENTS
3	8-19-08	FOR TOWN REVIEW
4		REVISION ISSUE DESCRIPTION

**PROJECT:**  
**TOWN OF CAPE ELIZABETH**  
**SHORE ROAD PATHWAY IMPROVEMENTS**  
 SHORE ROAD CAPE ELIZABETH, MAINE 04107

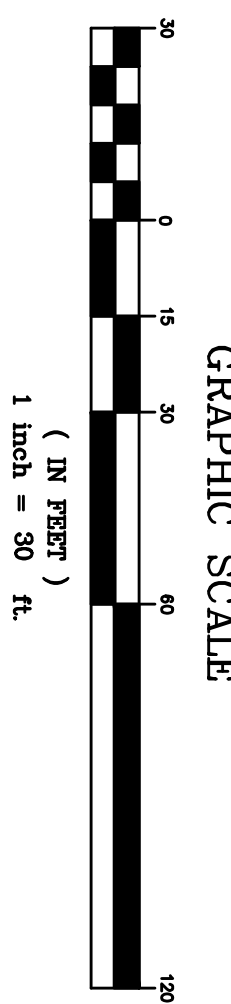
**Mitchell & Associates**  
 LANDSCAPE ARCHITECTS  
 THE STAPLES BUILDING, 70 CENTER STREET PORTLAND, MAINE 04101  
 PHONE: 207.774.4427 FAX: 207.874.2660

**oest ASSOCIATES, INC.**  
 343 Gorham Road, South Portland, ME 04106 P: (207) 774-1770 F: (207) 774-1246 www.oest.com  
 engineers • architects • surveyors • construction managers





CHECK GRAPHIC SCALES BEFORE USING  
GRAPHIC SCALE



NO.	DATE	REVISION	DESCRIPTION
1	08-19-08	FOR TOWN REVIEW	
2	09-2-08	REVISED PER COMMENTS	
3	09-2-08	FOR SHORE ROAD PATHWAY COMMITTEE REVIEW	

PROJECT: **TOWN OF CAPE ELIZABETH SHORE ROAD PATHWAY IMPROVEMENTS**  
SHORE ROAD CAPE ELIZABETH, MAINE 04107

PROJECT NUMBER: 3807101  
PROJECT MANAGER: SMH  
DATE OF RECORD: 08/01/08  
DRAWN BY: CDM  
SCALE: 1"=30'  
GRAPHIC SCALE: 1"=30'

TITLE: **EXISTING CONDITIONS AND SITE ANALYSIS**

DRAWING NO: **C-104**  
SHEET: 06 OF 07

**Mitchell & Associates**  
LANDSCAPE ARCHITECTS

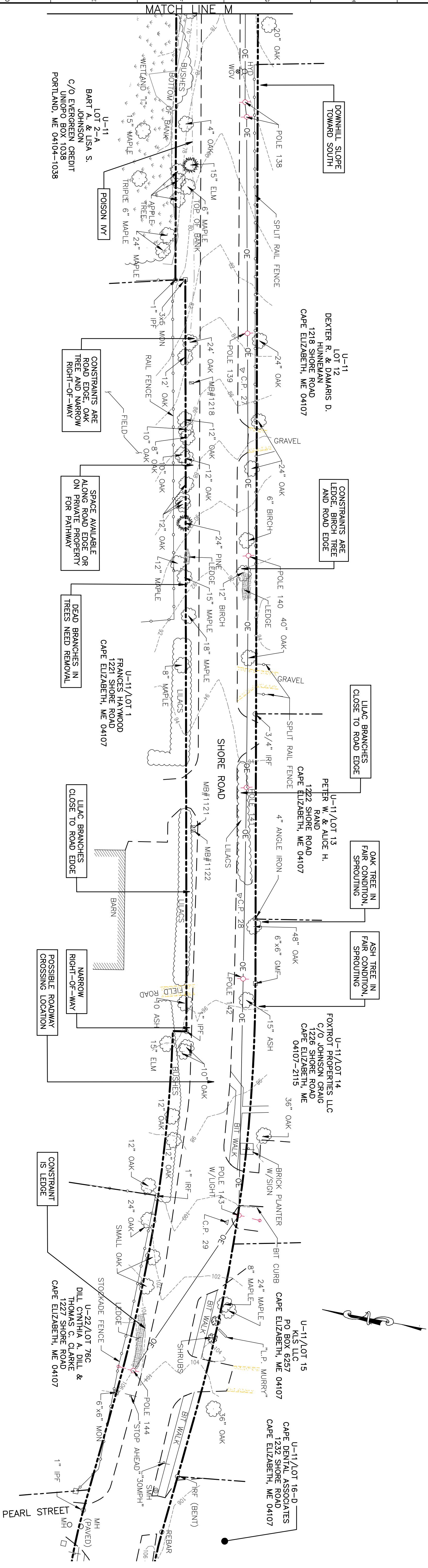
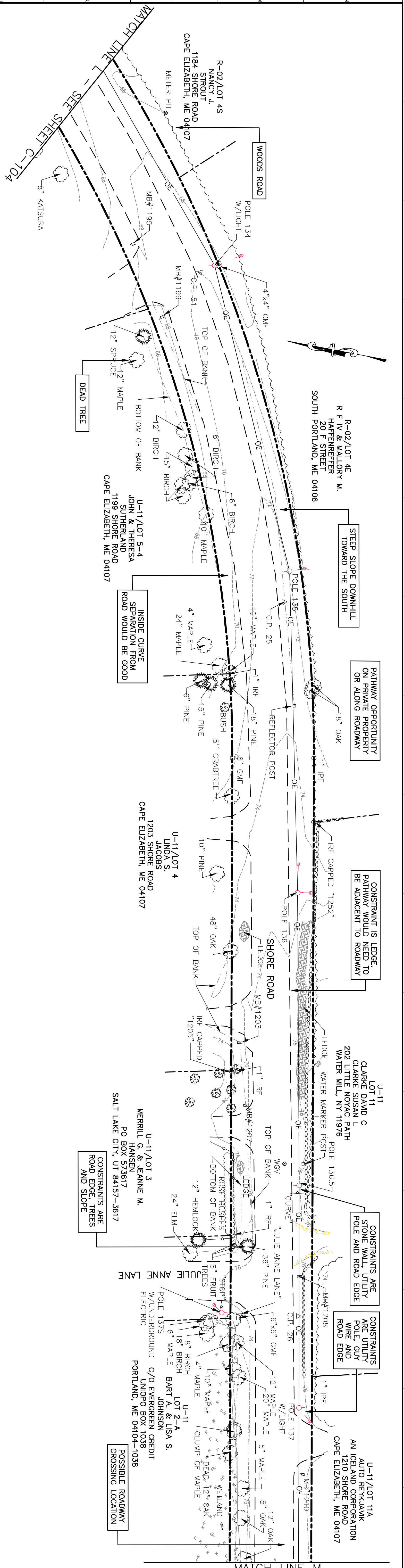
THE STAPLES SCHOOL, 70 CENTER STREET PORTLAND, MAINE 04101  
PHONE: 207.774.4427 FAX: 207.874.2660

**oest ASSOCIATES, INC.**  
engineers • architects • surveyors • construction managers

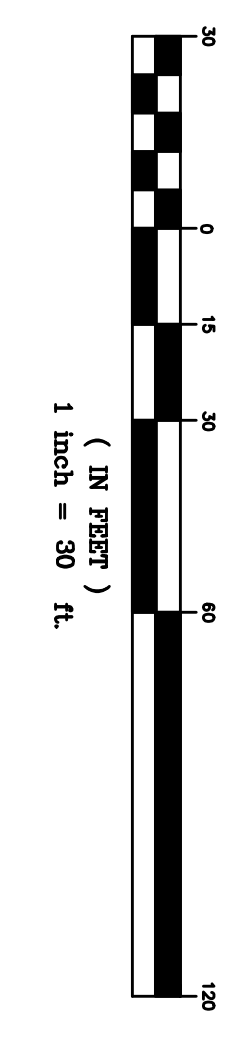
343 Gorham Road, South Portland, ME 04106 P: (207) 761-1770 F: (207) 774-1246 www.oest.com

PLEASE NOTE: THIS DOCUMENT MAY NOT ACCURATELY REPRESENT THE FINAL DOCUMENT. ONLY AN ENGINEER, ARCHITECT OR SURVEYOR SIGNED, SEALED AND DATED PAPER COPY, PROVIDED BY THIS OFFICE, MAY BE UTILIZED FOR BIDDING OR CONSTRUCTION PURPOSES.





CHECK GRAPHIC SCALES BEFORE USING  
GRAPHIC SCALE



REV	DATE	DESCRIPTION
2	8-19-08	FOR TOWN REVIEW
1	9-2-08	REVISED PER COMMENTS
0	SEPT. 2008	FOR SHORE ROAD PATHWAY COMMITTEE REVIEW

PROJECT:	DATE
TOWN OF CAPE ELIZABETH SHORE ROAD PATHWAY IMPROVEMENTS	SEPT. 2008

**Mitchell & Associates**  
LANDSCAPE ARCHITECTS  
70 CENTER STREET PORTLAND, MAINE 04101  
PHONE: 207.774.4427 FAX: 207.874.2660

**oest ASSOCIATES, INC.**  
engineers • architects • surveyors • construction managers  
343 Gorham Road, South Portland, ME 04106 P: (207) 761-1770 F: (207) 774-1246 www.oest.com

PLEASE NOTE: THIS DOCUMENT MAY NOT ACCURATELY REPRESENT THE FINAL DOCUMENT. ONLY AN ENGINEER, ARCHITECT OR SURVEYOR SIGNED, SEALED AND DATED PAPER COPY, PROVIDED BY THIS OFFICE, MAY BE UTILIZED FOR BIDDING OR CONSTRUCTION PURPOSES.